

Charts on the Withdrawal of Students from NAPLAN Tests

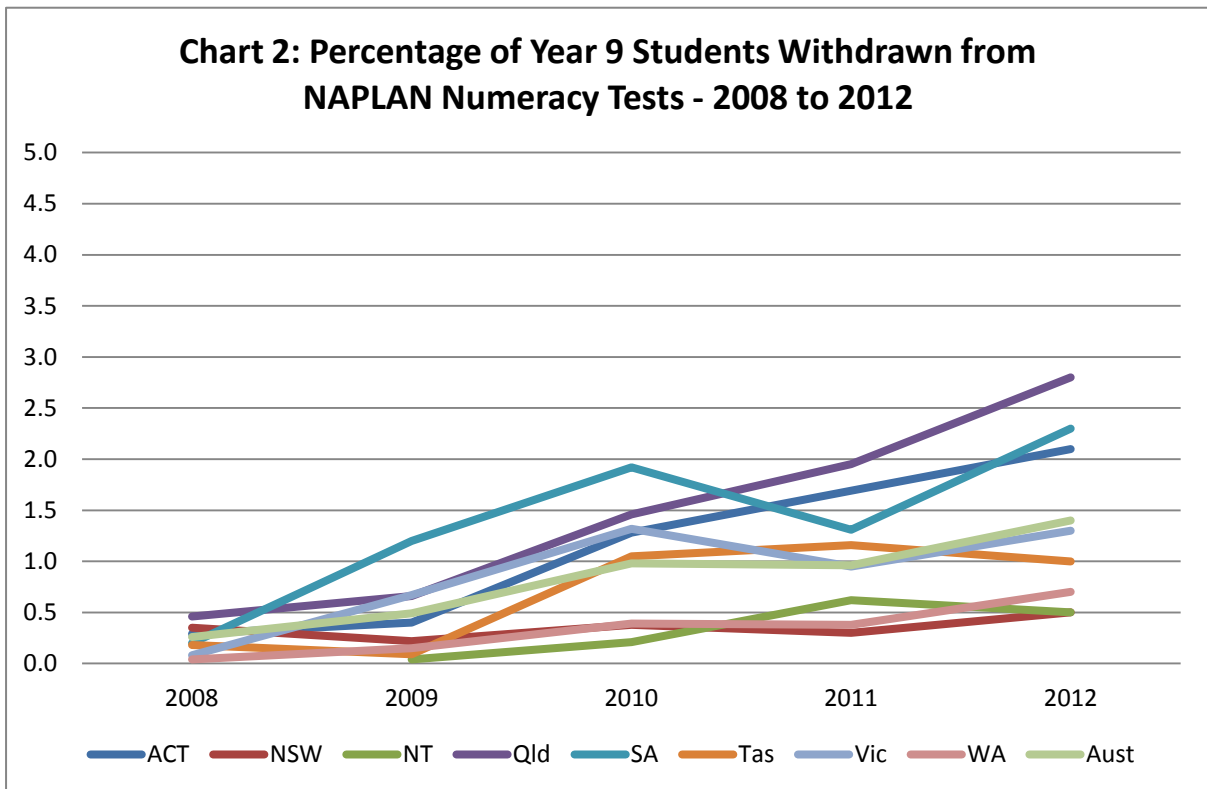
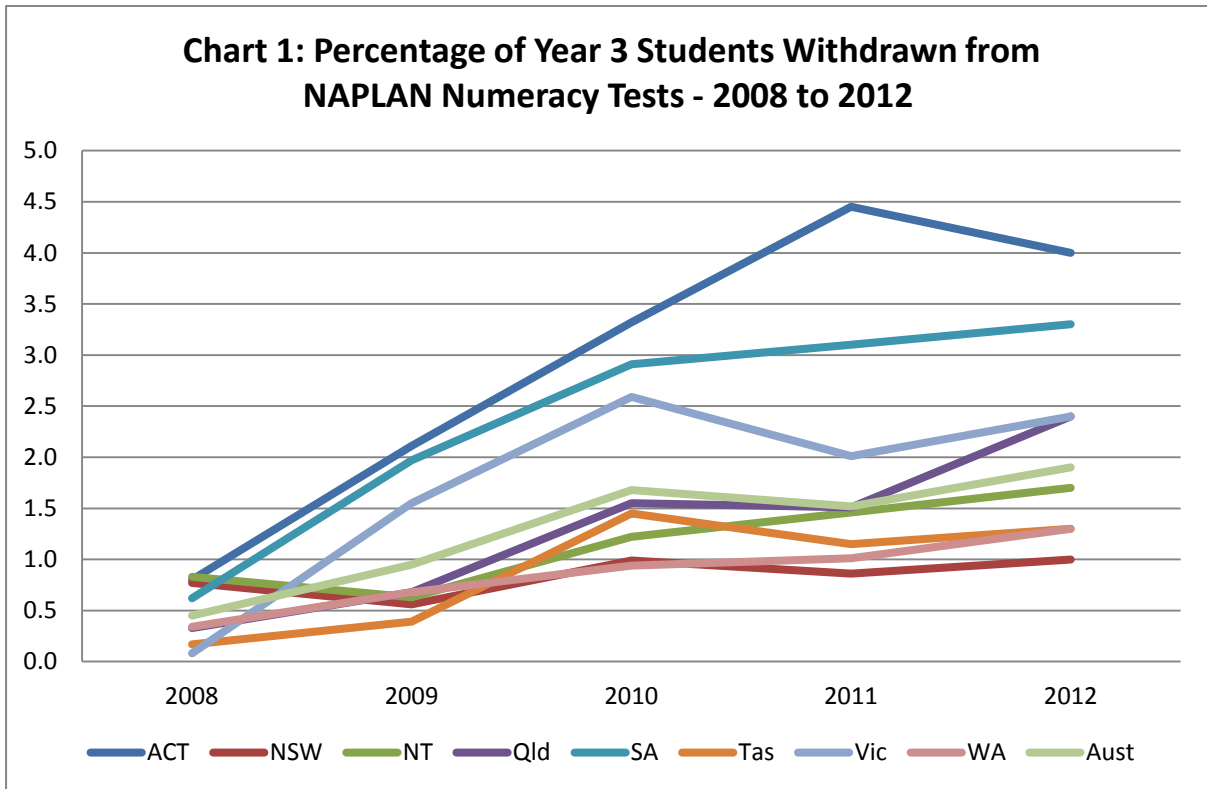


Chart 3: Percentage of Year 3 Students Present for NAPLAN Numeracy Tests - 2008 to 2012

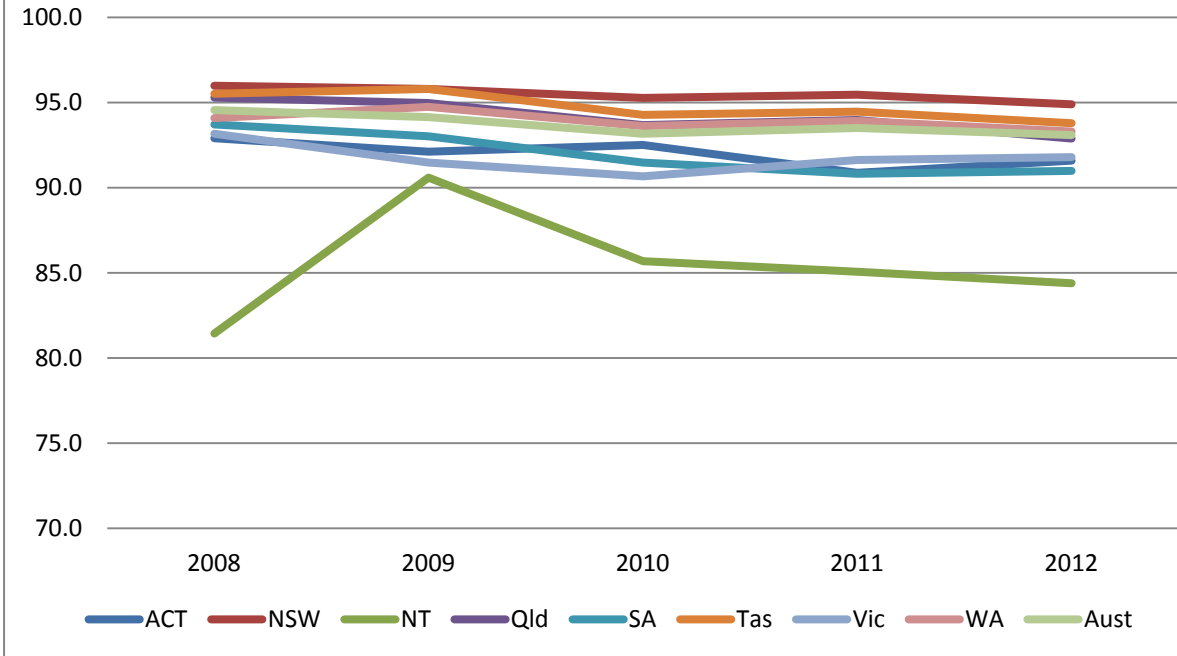


Chart 4: Percentage of Year 9 Students Present for NAPLAN Numeracy Tests - 2008 to 2009

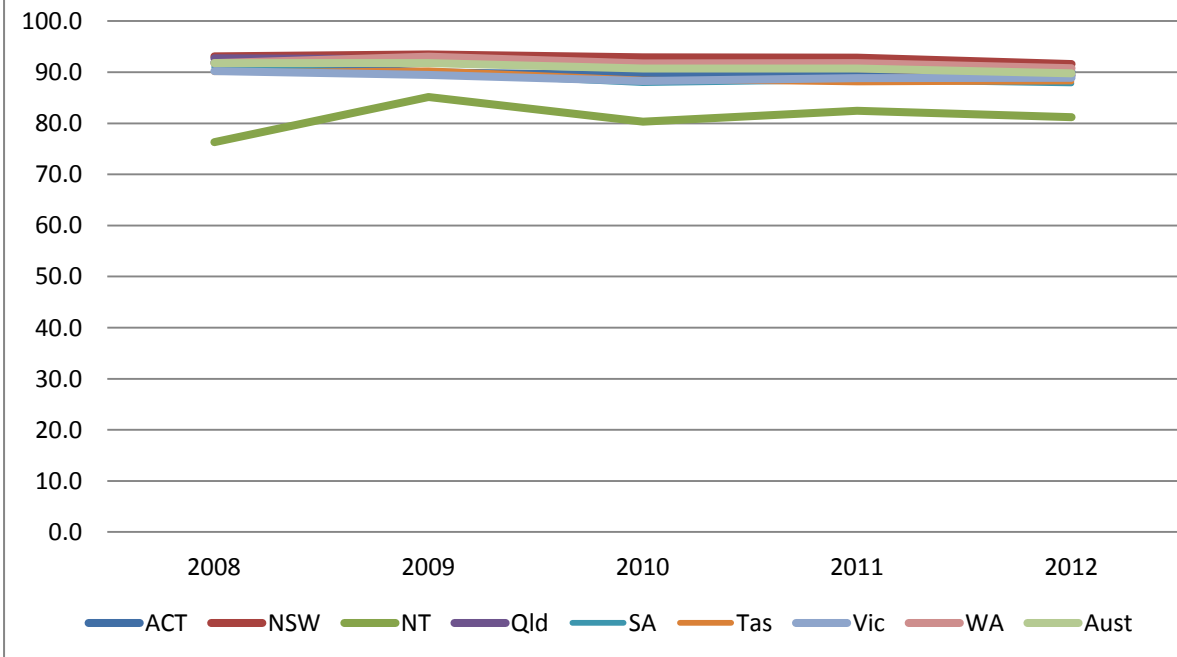


Chart 5: Percentage of Year 3 Students Exempt from NAPLAN Numeracy Tests - 2008 to 2012

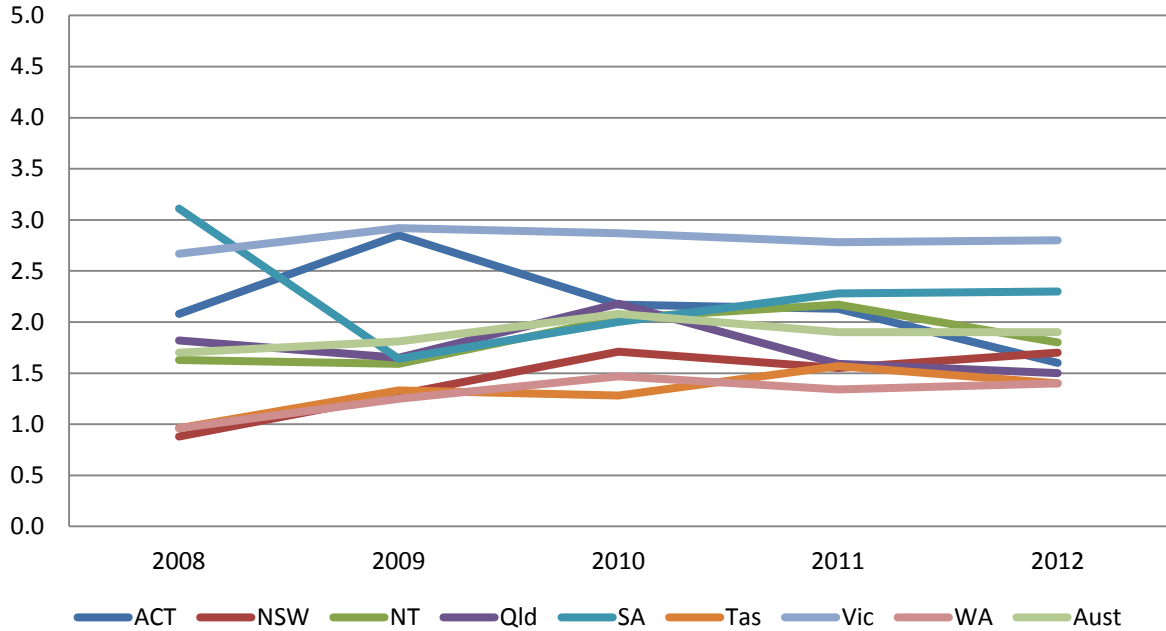


Chart 6: Percentage of Year 9 Students Exempt from NAPLAN Numeracy Tests - 2008 to 2012

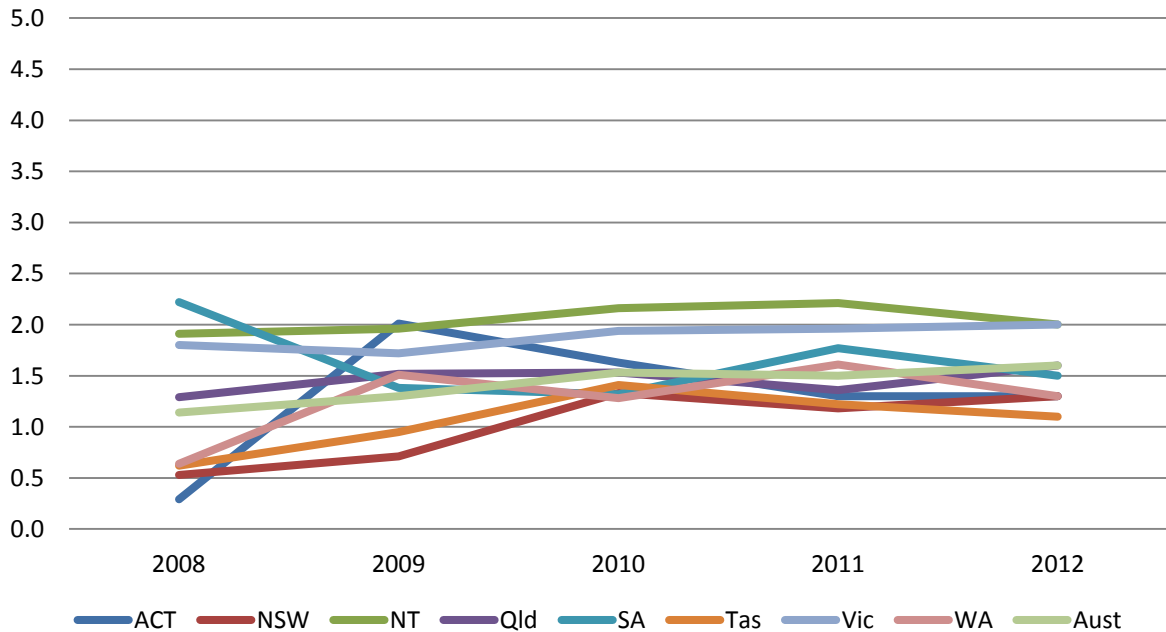


Chart 7: Percentage of Year 3 Students Absent from NAPLAN Numeracy Tests - 2008 to 2012

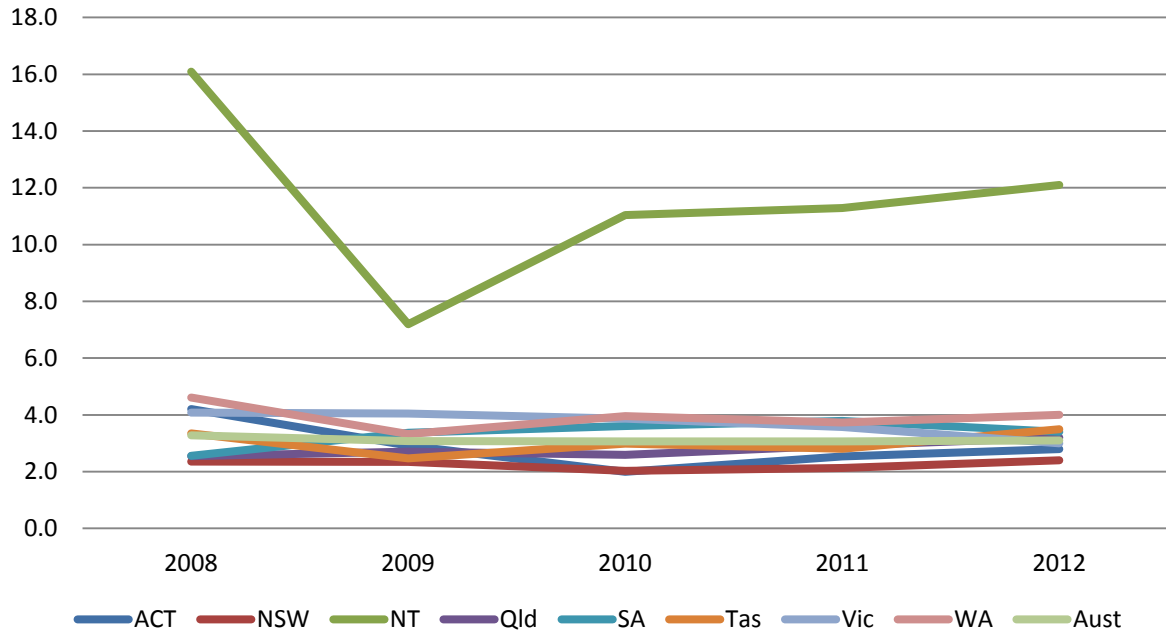


Chart 8: Percentage of Year 9 Students Absent from NAPLAN Numeracy Tests - 2008 to 2012

