

Charts and Tables on Re-allocation of Government Funding

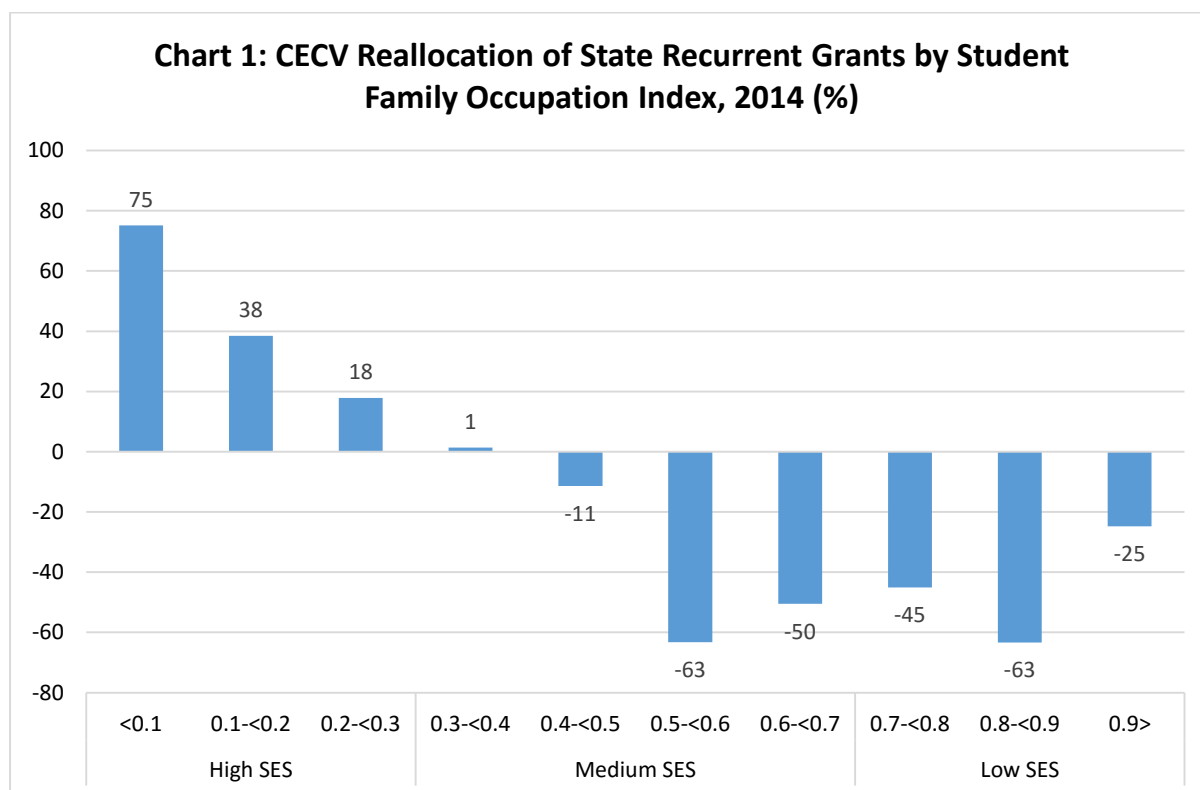


Table 1: CECV Re-distribution of State Recurrent Grants, 2014

Student Family Occupation Index	No. of schools	FAM per student (\$)	CECV per student \$	Re-distribution \$	Re-distribution %
<0.1	9	985.96	1,726.81	740.85	75.14
0.1-<0.2	63	1,282.84	1,776.15	493.31	38.45
0.2-<0.3	128	1,670.09	1,968.96	298.87	17.90
0.3-<0.4	142	2,076.11	2,104.57	28.46	1.37
0.4-<0.5	77	2,376.13	2,106.45	-269.68	-11.35
0.5-<0.6	38	3,249.26	1,194.84	-2,054.42	-63.23
0.6-<0.7	12	4,191.75	2,076.17	-2,115.58	-50.47
0.7-<0.8	5	4,636.47	2,545.83	-2,090.64	-45.09
0.8-<0.9	3	5,490.51	2,013.30	-3,477.21	-63.33
0.9>	2	3,729.10	2,806.82	-922.28	-24.73

Source: Victorian Auditor-General's Office

Chart 2: CECV Reallocation of Commonwealth Recurrent Grants, 2014 (%)

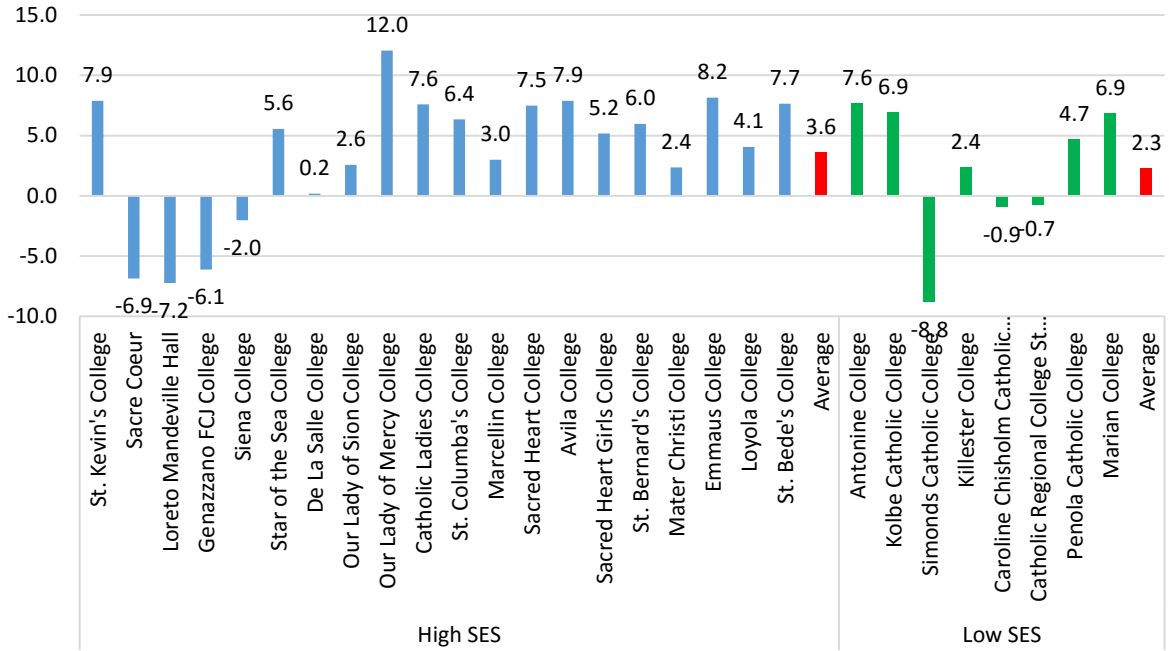


Table 2: CECV Re-distribution of Commonwealth Recurrent Grants, 2014

School	ICSEA	SES Q1 %	SES Q4 %	C/W Funding	Actual C/W	Re- distribution \$	Re- distribution %
				Entitlement \$ per student	Funding \$ per student		
High SES							
St. Kevin's College	1190	1	79	4,478	4,831	353	7.9
Sacre Coeur	1176	1	75	4,788	4,460	-328	-6.9
Loreto Mandeville Hall	1174	1	76	4,762	4,417	-345	-7.2
Genazzano FCJ College	1160	1	72	4,872	4,574	-298	-6.1
Siena College	1134	2	57	6,682	6,546	-136	-2.0
Star of the Sea College	1125	2	59	6,369	6,723	354	5.6
De La Salle College	1106	4	46	6,494	6,505	11	0.2
Our Lady of Sion College	1099	4	43	6,921	7,099	178	2.6
Our Lady of Mercy College	1093	5	42	6,692	7,498	806	12.0
Catholic Ladies College	1092	4	40	6,919	7,445	526	7.6
St. Columba's College	1090	5	39	6,954	7,396	442	6.4
Marcellin College	1090	5	40	6,562	6,759	197	3.0
Sacred Heart College	1083	7	36	7,324	7,873	549	7.5
Avila College	1081	7	39	6,810	7,347	537	7.9
Sacred Heart Girls College	1079	12	39	7,389	7,771	382	5.2
St. Bernard's College	1077	6	33	7,241	7,674	433	6.0
Mater Christi College	1072	8	32	7,523	7,701	178	2.4
Emmaus College	1072	9	32	7,160	7,744	584	8.2
Loyola College	1067	9	31	7,318	7,616	298	4.1
St. Bede's College	1062	7	31	6,900	7,428	528	7.7
Average	1106	5	47	6,508	6,770	262	3.6
Low SES							
Antonine College	904	58	5	8,513	9,163	650	7.6
Kolbe Catholic College	930	44	8	9,733	10,405	672	6.9
Simonds Catholic College	944	53	9	10,338	9,428	-910	-8.8
Killester College	951	36	10	9,422	9,647	225	2.4
Caroline Chisholm Catholic College	957	40	10	9,615	9,527	-88	-0.9
Catholic Regional College St Albans	957	46	7	12,650	12,561	-89	-0.7
Penola Catholic College	966	44	4	9,244	9,678	434	4.7
Marian College	967	43	7	9,955	10,638	683	6.9
Average	947	46	8	9,934	10,131	197	2.3

Sources: Senate Estimates, My School.